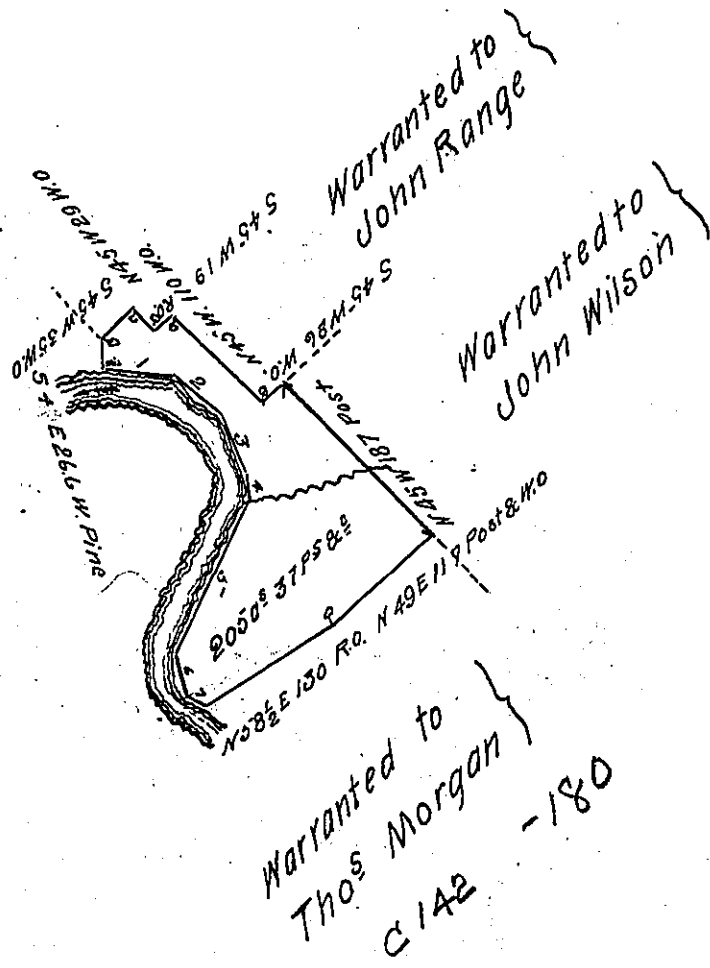


Courses & distances up  
Clarion River from W. Pine

- N 15.85 E 60
- .. 2 5 50 E 54
- .. 3 5 24 E 52
- .. 4 5 6 E 23
- .. 5 5 25 W 150
- .. 6 5 14 E 38
- .. 7 5 60 E 18 to W.O.



Draft of a tract of land situate in Beaver township Venango county  
 North & East of and adjoining Clarion River  
 Surveyed 5<sup>th</sup> February 1838. in pursuance of a warrant granted to  
 Thomas Bell and Nancy Bell (administratrix of John Bell dec<sup>d</sup>)  
 dated 22<sup>d</sup> April 1837

John Taylor Esquire }  
 Surveyor General of Pa }

Rich<sup>d</sup> Irwin D.S.

IN TESTIMONY that the above is a copy of the original remaining on file in  
 the Department of Internal Affairs of Pennsylvania, made  
 conformably to an Act of Assembly approved the 16th day of  
 February, 1833, I have hereunto set my Hand and caused  
 the Seal of said Department to be affixed at Harrisburg,  
 this first day of February 1904

*James P. Brown*  
 Secretary of Internal Affairs.